



Synodality





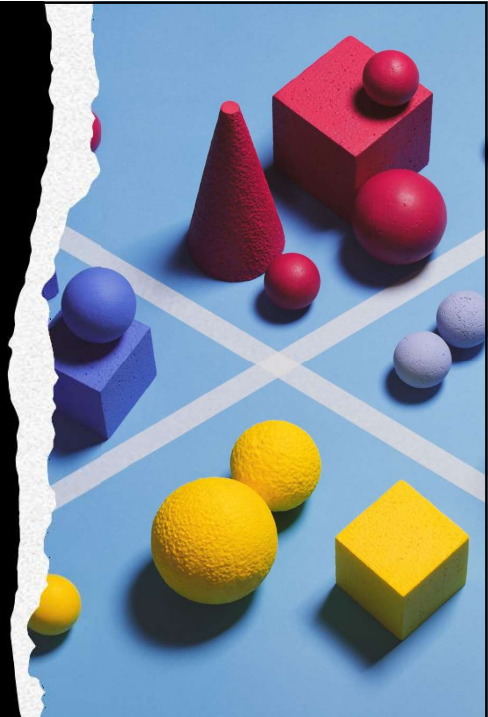
An Unprecedented Time

- Volatility
- Uncertainty
- Complexity
- Ambiguity



Post modernity is volatile, uncertain,
complex and ambiguous

- De-centring
- Fragmentation
- Critique
- Is the self a construct



- The Bible repeats three liminal themes. The themes are desert/wilderness, pit/grave, and exile/pilgrimage.
- This paradigm is reflected in the liturgical calendar's recognition of Advent, Lent, Paschal Mystery, and Holy Saturday.
- Jesus bring people into "liminal" space and experience.



- Communion
- Participation
- Mission



Pastoral conversion

Julie's I pad

The Synods Purpose

to plant dreams, draw forth prophecies and visions, allow hope to flourish, inspire trust, bind up wounds, weave together relationships, awaken a dawn of hope, learn from one another, and create a bright resourcefulness that will enlighten minds, warm hearts, give strength to our hands.



Discernment must be carried out in a **space** of prayer, meditation, reflection and study, which we need to hear the voice of the Spirit; by means of sincere, serene and objective dialogue with our brothers and sisters; by paying attention to the real experiences and challenges of every community and every situation; in the melting-pot of feelings and thoughts that enable us to understand the Lord's will; by searching to be set free by the Gospel from any obstacle that might weaken our openness to the Spirit. (114)



What environment do we need for sincere, serene and objective dialogue with our brothers and sisters? What might enable us to create that environment?

In order to be set free by the Gospel from any obstacle that might weaken our openness to the Spirit, what pastoral conversion might I need, my community need, the Church need?

What would support this conversion?